

# ROOFINOX<sup>®</sup>

FAÇADE SYSTEMS

**HFX STAINLESS  
FOR ROOF +  
FACADE**

**Like no other.**

# Roofinox

Roofinox is nothing less than the complete evolution of the building envelope with HFX stainless as a material for roof and façade. All products have been specially developed for use in building envelopes. Roofinox HFX stainless combines aesthetics and resilience in a single material and offers the following benefits:

## MATERIAL WARRANTY ROOFINOX HFX STAINLESS



- \_\_\_\_\_ 60 years security
- \_\_\_\_\_ 60 years UV resistance
- \_\_\_\_\_ 60 years defect-free materials
- \_\_\_\_\_ 60 years defect free surfaces
- \_\_\_\_\_ 60 years protection

\* Details and warranty conditions can be found in the warranty certificate

## SAFETY THROUGH DURABILITY



- \_\_\_\_\_ Eternal longevity
- \_\_\_\_\_ 60 years warranty
- \_\_\_\_\_ Rust-free material
- \_\_\_\_\_ Low expansion
- \_\_\_\_\_ Resistant to moisture, bitumen, membranes, wood, etc.

## BEAUTY THROUGH SURFACE DESIGNS



- \_\_\_\_\_ More than 15 different surfaces
- \_\_\_\_\_ Ultra matte to super mirror
- \_\_\_\_\_ Smooth to structured
- \_\_\_\_\_ Naturally metallic to pigmented
- \_\_\_\_\_ Coloured to patinating
- \_\_\_\_\_ 100% UV resistant

## STRENGTH THROUGH STABILITY



- \_\_\_\_\_ Hail-resistant
- \_\_\_\_\_ Storm-proof
- \_\_\_\_\_ Cold-resistant
- \_\_\_\_\_ Long-term water tightness (soldered, seamed)
- \_\_\_\_\_ 3 times stronger than aluminium
- \_\_\_\_\_ Storm protection

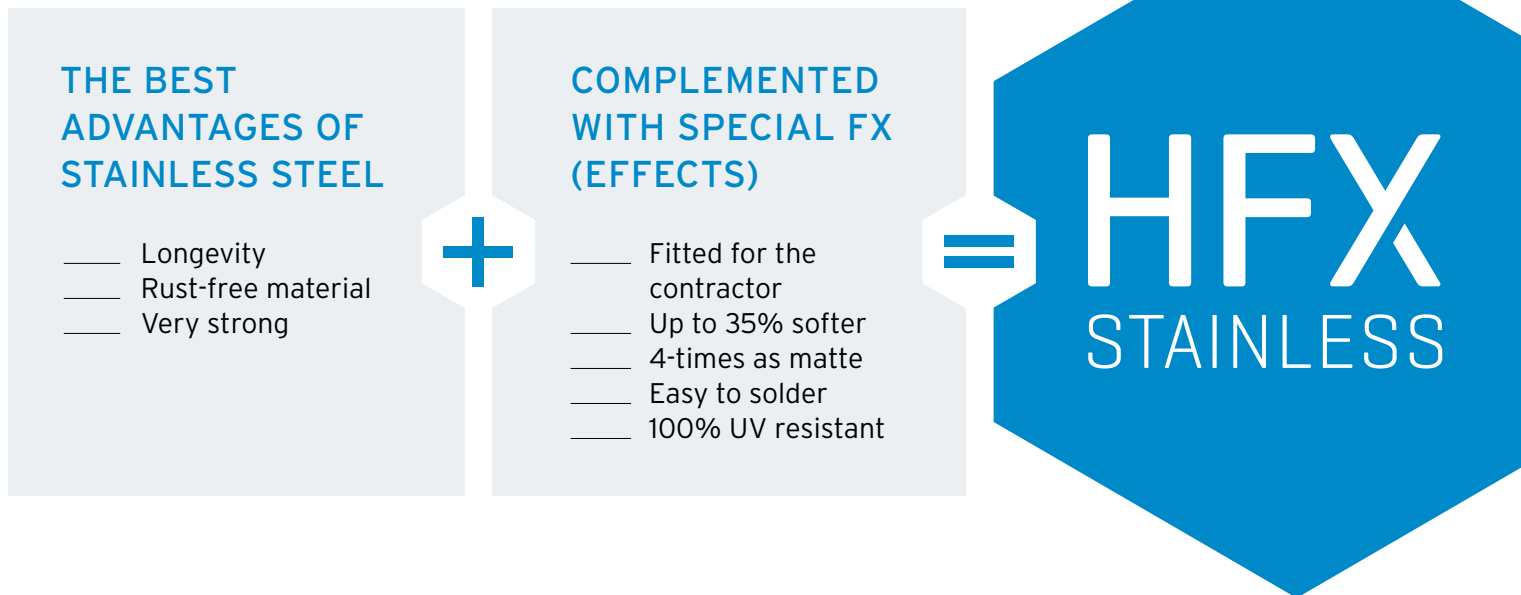
## FUNCTIONALITY THROUGH SMART DESIGN



- \_\_\_\_\_ Fitted for the contractor
- \_\_\_\_\_ Up to 35% softer
- \_\_\_\_\_ Easy to seam and solder
- \_\_\_\_\_ Workable by hand
- \_\_\_\_\_ Lightweight
- \_\_\_\_\_ Complete system for roof and façade

# HFX stainless

Roofinox is inventor of the HFX stainless technology.  
HFX stainless is a highly-flexible stainless steel with  
special FX (effects) for use in roofing and façades.  
HFX stainless represents the evolution of stainless steel.



## Roofinox Full System

### ROOF & FAÇADE



Products & Systems

### R.SYS



Roof drainage system

### COILS & SHEETS

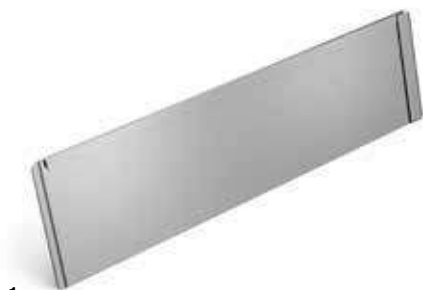


1.4301 / 1.4404 / 1.4510  
304 / 316L / 439  
Alloys

### ROOFINOX ACCESSORIES



Roofinox all-round package



1 MATADOR  
IN CLASSIC



4 ATLAS  
IN CLASSIC



7 DOLOMIT  
IN CLASSIC



2 AXIS  
IN CLASSIC



5 URAL  
IN CLASSIC



8 JURA  
IN CLASSIC



3 ZAGROS  
IN CLASSIC



6 ALTAI  
IN CLASSIC



9 GRID  
IN CLASSIC

# Products

Forever and eternal -  
Roofinox HFX stainless façade are maintenance-  
free, durable and environmentally friendly.  
The finest protection for your home.



TARTAN  
IN SPECTRA SEDONA

10



METRO  
IN CLASSIC

11



MANSARD  
IN DURA CHAMPAGNE

12



STANDING SEAM  
IN CLASSIC

- 1 **ROOFINOX MATADOR**  
Probably the strongest roof  
and façade panel in the world
- 2 **ROOFINOX AXIS**  
The designer façade cladding
- 3 **ROOFINOX ZAGROS**  
The outstanding  
architectural profiles
- 4 **ROOFINOX ATLAS**  
The outstanding  
architectural profiles
- 5 **ROOFINOX URAL**  
The architectural profiles  
with pleated effect
- 6 **ROOFINOX ALTAI**  
The architectural profiles  
with pleated effect
- 7 **ROOFINOX DOLOMIT**  
The architectural trapezoid profiles
- 8 **ROOFINOX JURA**  
The architectural trapezoid profiles
- 9 **ROOFINOX GRID**  
The large rectangular tile
- 10 **ROOFINOX TARTAN**  
The traditional square diamond tile
- 11 **ROOFINOX METRO**  
The modern flatlock tile
- 12 **ROOFINOX MANSARD**  
The elegant rhomboid tile
- 13 **ROOFINOX STANDING SEAM**  
The metal façade classic

# Rainscreen

The intelligent, modern façade system:  
back ventilated rainscreen

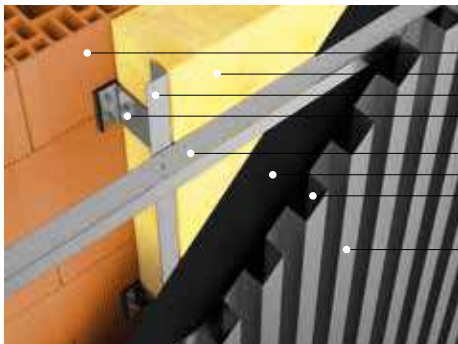
A rainscreen wall structure consists of a thermal-insulation layer and a weather-protection layer separated by an air layer. An example of a façade system from outside to inside could be:

- \_\_\_\_\_ Roofinox façade cladding
- \_\_\_\_\_ Air layer
- \_\_\_\_\_ Vertical profiles in the ventilation and insulation layers
- \_\_\_\_\_ Support structure

Rainscreen can be attached to lightweight walls as well, especially used during renovation.

## Advantages:

- \_\_\_\_\_ Large variety of designs
- \_\_\_\_\_ Wide range of shapes for the outer façade
- \_\_\_\_\_ Moisture regulation
- \_\_\_\_\_ Outstanding building physical properties
- \_\_\_\_\_ Sustainable, environmentally friendly and recyclable



- \_\_\_\_\_ Wall / structural system
- \_\_\_\_\_ Thermal insulation
- \_\_\_\_\_ Vertical support profile
- \_\_\_\_\_ Wall bracket with insulation board
- \_\_\_\_\_ Horizontal support profile
- \_\_\_\_\_ Water / air barrier
- \_\_\_\_\_ Rear-ventilation area
- \_\_\_\_\_ Wall cladding

## Insulation

Typical insulation materials in rainscreens are:

- \_\_\_\_\_ Mineral-wool insulation boards
- \_\_\_\_\_ Wood fiber boards
- \_\_\_\_\_ Hemp or jute insulation boards
- \_\_\_\_\_ Dimensionally stable insulation boards made of sheep wool
- \_\_\_\_\_ Cork boards
- \_\_\_\_\_ Foam boards are possible, but not ideal

Natural insulation boards are preferable because they provide thermal protection in summer and a visible moisture dissipation caused by capillary action.

## Building physics

This façade system has excellent structural properties: Warm air is discharged through the rear-ventilation gap, which counteracts both cold in winter and heat in summer. Rainscreen is also perfect for energetical renovation, as it can be used on existing walls with moisture or thermal problems.

# Subframing

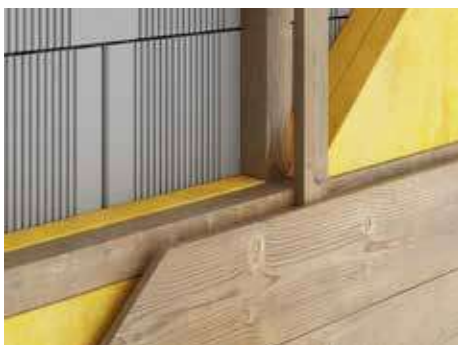
Subframing (SF):  
Static link between the  
façade and the structure

## Full-surface substructure

Usually the substructure does not meet any aesthetic requirements, rather it implements back ventilation. It fastens the façade to the building's load-bearing outer wall, thermal insulation and accommodates building tolerances. In principle, every substructure available on the market can be combined with Roofinox façade products, but we recommend structures matched to the façade system. The following two system-dependent types are required for Roofinox façade products:

The full or spaced sheathing represents the traditional variant, which is usually based on wood. For this purpose, the insulation level is bridged with battens and counter battens, an additional vertical counter batten offers the necessary back ventilation level and a final layer of boards provides a fully supported mounting base for the cladding elements. A separation layer is not required, but is recommended due to potential risks associated with condensation and wood as well as any rusty nails that may be used.

Due to wood's limited longevity and flammability, a two-shell structure made of metal has been developed, which accommodates for building tolerances, takes over the static function and ensures sufficient back ventilation. For this purpose, the Roofinox SF trapezoid profile is mounted vertically on a horizontal metal substructure consisting of aluminum wall brackets and support profiles, which covers the insulation layer and accommodates construction tolerances. This creates a non-flammable structure, which is also protected against corrosion and represents a minimal thermal bridge.

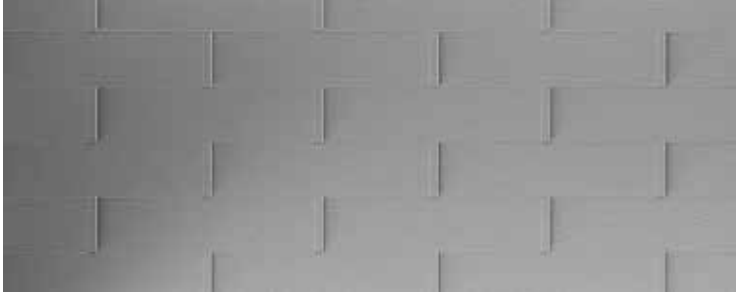


## Intermittent subframing



This type of metal substructure with two- or three-piece construction is very widespread. This system, consisting of thermal insulation, intermittent wall bracket, continuous metal rail and optional continuous outer metal rail, allows a three-dimensional adjustment and forms an unrestrained mounting plane on the outer wall. However, this type of substructure is only suitable for certain cladding types, because the subframing is intermittent instead of fully

supported sheathing. The substructure absorbs heat-related linear expansion and accommodates the dead load of cladding and wind pressure. For this, we work with fixed-point / floating-point construction. The fixed point absorbs both load types while the floating point only accommodates wind pressure, but allows thermal expansion to be considered.



This evolution in roof and façade panels offers maximum protection against storms and wear. If you require extra safety and longevity, Matador offers you the ability to combine both beauty and function. Matador is the elegant and invincible panel for all weathers.

- 1 Extremely corrosion resistant
- 2 Stands up to all weather conditions (hail, storm, heavy rain, snow, heat, sun)
- 3 Maintenance-free
- 4 Ideal for renovations
- 5 Creates monolithic building envelopes

#### TECHNICAL DATA MATADOR

##### Sizes:

Roofinox Matador S	443 x 320 mm; 7 pcs / m <sup>2</sup>
Roofinox Matador M	886 x 320 mm; 3,5 pcs / m <sup>2</sup>
Roofinox Matador L	1.329 x 320 mm; 2,4 pcs / m <sup>2</sup>

##### Material:

HFX stainless steel of alloys  
439 / 304 / 316L

##### Design surfaces:

Classic, Spectra Vulcano, Chroma

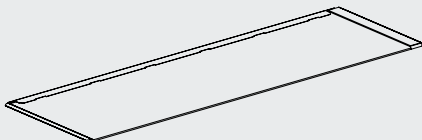
Fastening: concealed, with Roofinox clips  
(pre-assembled)

Substrate: battens (30 x 50 mm, spacing 160 mm),  
proprietary sub-framing system, fully supported  
sheathing > 24 mm, or metal subframing with  
Roofinox SF corrugated profile

Please respect country-specific standards  
and technical regulations

##### Weight / panel:

Size S:	0,925 kg / pc
Size M:	1,820 kg / pc
Size L:	2,440 kg / pc



WALL STRUCTURE



SINGLE PANEL



Roofinox

# Matador

Roofinox Matador.  
Probably the strongest roof and façade panel in the world.



The elegant, straightforward shape is ideal for renovation, as it can be laid on furring or fully supported sheathing. Even less resilient constructions can be fitted thanks to the low weight and HFX stainless goes well with all materials. The complete system with a full set of accessories allows the roof and façade to be built from one cast.



Experience modernity with all the advantages of traditional craftsmanship. Consistent aesthetics and design for the entire building envelope. Inside and out, from top to bottom - your entire house.



Roofinox Axis is the design profile in New Objectivity style. Axis reveals modern character and surprising effects - the façade panel's irregular structure creates an interplay of light and shadow. Covered over a large area, Axis shows a wave-like image with flowing optics. For representative, exciting buildings.

Roofinox

# Axis

Roofinox Axis.  
The designer façade cladding.

THE ORIGINAL  
SINCE 2007



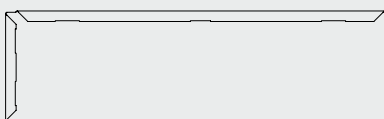
- 1 Design profile for modern facades
- 2 Surprising effects of light and shadow
- 3 For representative, exciting buildings
- 4 100% maintenance-free
- 5 Lasts for generations

## TECHNICAL DATA AXIS

Size: 560 x 2.435 mm; 0,7 Pcs / m<sup>2</sup>  
Size: 560 x 1.215 mm; 1,5 Pcs / m<sup>2</sup>

Material: all Roofinox surfaces & alloys  
Fastening: concealed, with stainless steel clips  
Substrate: fully supported sheathing > 24 mm, metal subframing with Roofinox SF corrugated profile or vertical metal substructure

Please respect country-specific standards and technical regulations  
Weight Axis: 4,4 kg / m<sup>2</sup>



WALL STRUCTURE



SINGLE PANEL



If you want to make your façade elegant and puristic, but not ordinary, you will enjoy the classic ornamentation of the Zagros and Atlas Meander profiles.

- 1 Elegant, pure forms
- 2 At the same time extraordinary
- 3 Clearly structured overall look
- 4 100% maintenance-free
- 5 Lasts for generations

#### TECHNICAL DATA ZAGROS / ATLAS

Roofinox Zagros - Meander 30  
Size: 638 x 1.000 to 6.300 mm

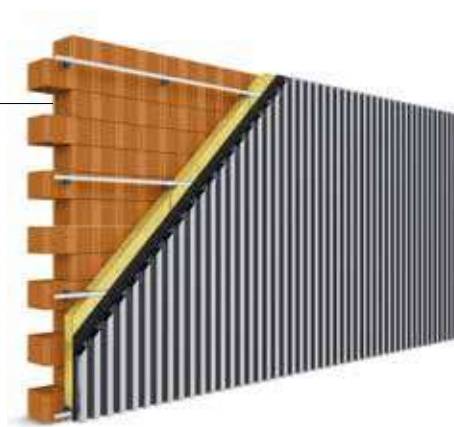
Roofinox Atlas - Meander 62  
Size: 610 x 1.000 to 6.300 mm

Material: all Roofinox surfaces & alloys  
Fastening: visible, with stainless steel screws or rivets  
Substrate: vertical or horizontal metal substructure

Please respect country-specific standards and technical regulations

Weight Zagros: 7,7 kg / m<sup>2</sup>

Weight Atlas: 8,1 kg / m<sup>2</sup>



WALL STRUCTURE



SINGLE PANEL

ZAGROS



ATLAS



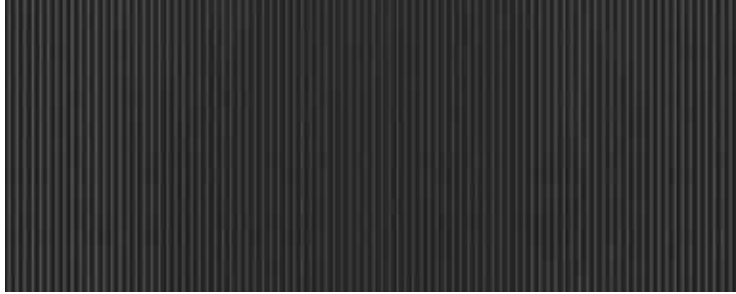
Roofinox

# Zagros Atlas

Roofinox Zagros and Atlas.  
The outstanding architectural profiles.



Zagros and Atlas are extraordinary architectural profiles characterized by right angles. The profile panel creates a very smooth, clearly structured look with exciting shadow effects. Used as rainscreen cladding, the profiles create a very stately and expressive cover for the building, which enters into lively dialogue with its surroundings.



Roofinox pointed profiles Ural and Altai envelop your building like a movable curtain. For modern, uniform façades as though made in one piece.



Ural and Altai are highly exciting, homogeneously structured architectural profiles without even surfaces. They play with the viewer's perception and present an amazing pleated effect. The regular stringing together of individual points is geometric and playful at the same time. Ural and Altai façades seem to be enveloped in dynamic, delicately woven fabric, forming a durable and protective shell.

# Roofinox Ural Altai

Roofinox Altai and Ural.  
The architectural profiles with pleated effect.



- 1 Homogeneous overall image
- 2 Dainty pointed profiles
- 3 Aesthetic pleated effect
- 4 100% maintenance-free
- 5 Lasts for generations

## TECHNICAL DATA URAL / ALTAI

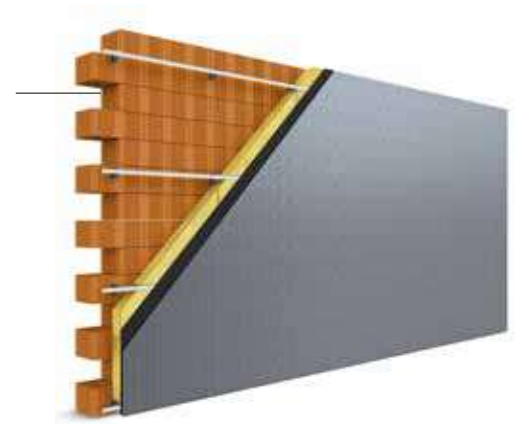
Roofinox Ural - pointed profile 15  
Size: 864 x 1.000 to 4.200 mm

Roofinox Altai - pointed profile 60  
Size: 382 x 1.000 to 3.500 mm

Material: all Roofinox surfaces & alloys  
Fastening: visible, with stainless steel screws  
or rivets  
Substrate: vertical or horizontal metal  
substructure

Please respect country-specific standards and  
technical regulations

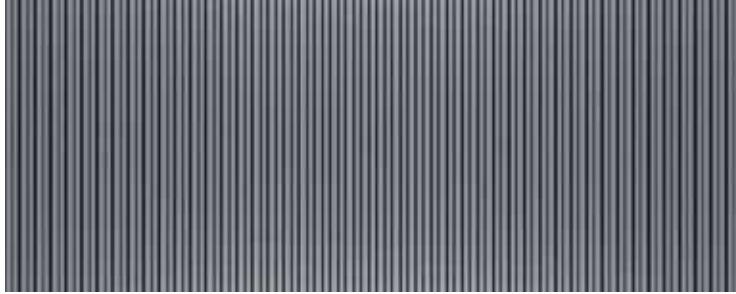
Weight Ural: 5,7 kg / m<sup>2</sup>  
Weight Altai: 6,5 kg / m<sup>2</sup>



WALL STRUCTURE



SINGLE PANEL



Go recreate the principle of trapezoid profiles for the façade.  
Unexpectedly highly suitable for all types of construction,  
Roofinox Dolomit and Jura profiles enable completely new  
approaches to rainscreen design.

- 1 Sets contrasting accents
- 2 Yet unobtrusive design
- 3 Puts the old familiar in a new light
- 4 100% maintenance-free
- 5 Lasts for generations

#### TECHNICAL DATA DOLOMIT / JURA

Roofinox Dolomit - trapezoid profile 25  
Size: 762 x 1.000 to 6.300 mm

Roofinox Jura - trapezoid profile 40  
Size: 977 x 1.000 to 6.300 mm

Material: all Roofinox surfaces & alloys  
Fastening: visible, with stainless steel  
screws or rivets  
Substrate: vertical or horizontal metal  
substructure

Please respect country-specific standards and  
technical regulations

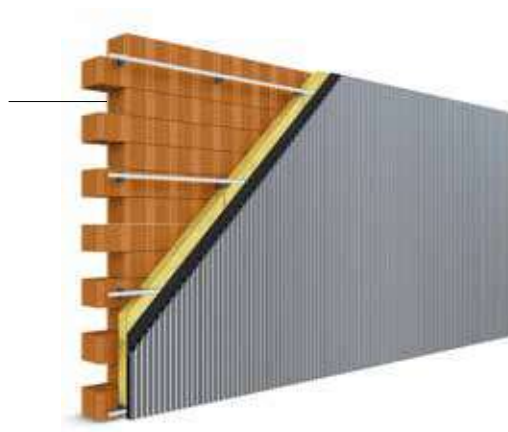
Weight Dolomit: 6,5 kg / m<sup>2</sup>

Weight Jura: 5,1 kg / m<sup>2</sup>

DOLOMIT



JURA



WALL STRUCTURE



SINGLE PANEL



Roofinox

# Dolomit Jura

Roofinox Dolomit and Jura.  
The architectural trapezoid profiles.



Dolomit and Jura architectural trapezoid profiles shine a new light on the old and familiar. Contrasting surfaces set accents on the building envelope without necessarily putting it in the foreground. In application, they function like a curtain for the building. Through well-placed or defined perforations, the „curtain“ can also be stretched over windows and hide façade openings skillfully.



For fans of large-format, clear design language. Covered consistently over a large area, the appearance of Roofinox Grid is elegant and objective, but can also be interrupted playfully by profiles in other sizes or materials.

- 1 Modern large rectangular flatlock tile
- 2 Dynamic surface structure
- 3 For contemporary architecture
- 4 100% maintenance-free
- 5 Lasts for generations

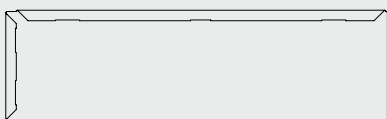
#### TECHNICAL DATA GRID

Two different formats:  
Grid 35: 350 x 2.350 mm  
Grid 56: 560 x 1.150 mm

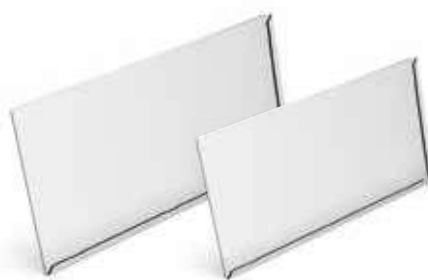
Material: all Roofinox surfaces & alloys  
Fastening: concealed, with Roofinox clips  
Substrate: fully supported sheathing > 24 mm, metal subframing with Roofinox SF corrugated profile or vertical / horizontal metal substructure

Please respect country-specific standards and technical regulations

Weight:  
Grid 35: 4,8 kg / m<sup>2</sup>  
Grid 56: 4,6 kg / m<sup>2</sup>



WALL STRUCTURE



SINGLE PANEL



Roofinox

# Grid

Roofinox Grid.  
The large rectangular tile.



Grid makes a clear statement with its regular, large-surface format. Roofinox Grid covers the building like a metallic skin, for an aesthetic and striking appearance. At the same time, its large area allows the observer to focus on details.



A sturdy shell, copied from nature, forms a protective skin for your home. A façade covered with Tartan looks organic and friendly, yet speaks a clear, no-frills design language. For those people who appreciate proven methods in a contemporary way.

- 1 Tradition interpreted in a modern way
- 2 Attractive scale-like appearance
- 3 With or without flattened, overlapping corners
- 4 Lasts for generations
- 5 100% maintenance-free

#### TECHNICAL DATA TARTAN

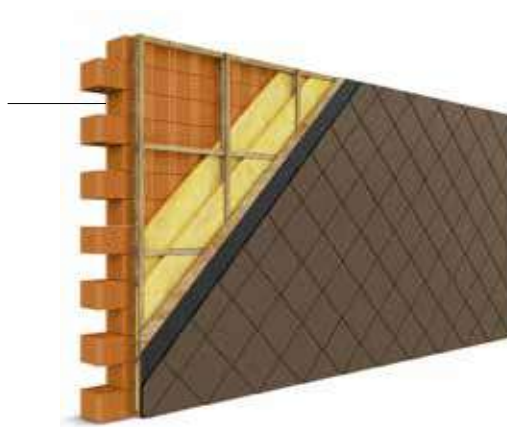
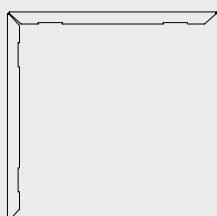
Two different designs,  
three different formats::  
Tartan Typic M: 330 x 330 mm; 9,2 Pcs / m<sup>2</sup>  
Tartan Typic L: 410 x 410 mm; 5,9 Pcs / m<sup>2</sup>  
Tartan Typic XL: 510 x 510 mm; 3,8 Pcs / m<sup>2</sup>

Tartan Style M: 330 x 330 mm; 9,2 Pcs / m<sup>2</sup>  
Tartan Style L: 430 x 430 mm; 5,4 Pcs / m<sup>2</sup>  
Tartan Style XL: 530 x 530 mm; 3,6 Pcs / m<sup>2</sup>

Material: all Roofinox surfaces & alloys  
Fastening: concealed, with Roofinox clips  
Substrate: fully supported sheathing > 24mm or metal  
subframing with Roofinox SF corrugated profile

Please respect country-specific standards and  
technical regulations

Weight:  
Tartan Classic: 4,8 to 5,4 kg / m<sup>2</sup>  
Tartan Style: 4,6 to 5 kg / m<sup>2</sup>



WALL STRUCTURE



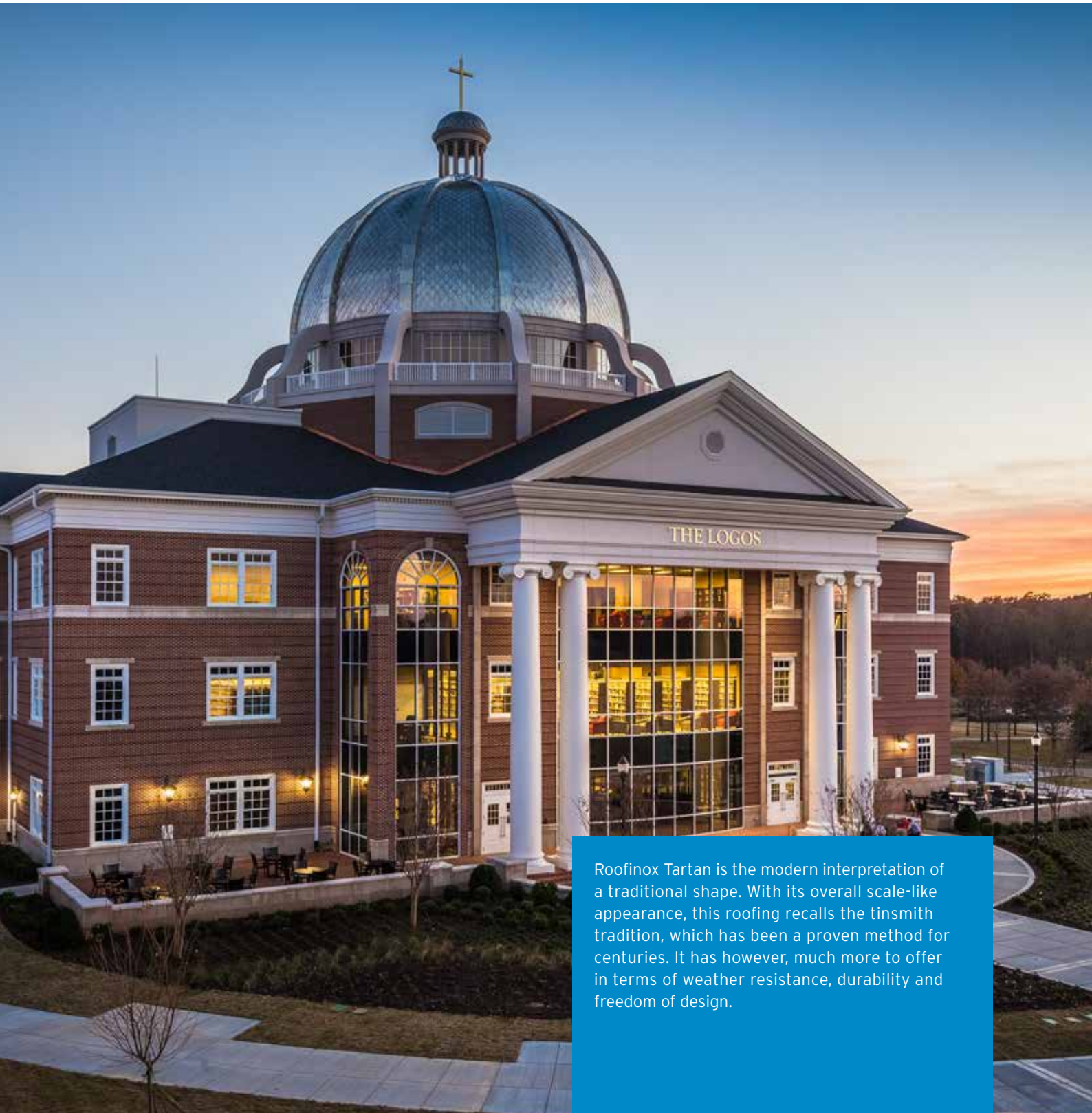
SINGLE PANEL



Roofinox

# Tartan

Roofinox Tartan.  
The traditional square diamond tile.



Roofinox Tartan is the modern interpretation of a traditional shape. With its overall scale-like appearance, this roofing recalls the tinsmith tradition, which has been a proven method for centuries. It has however, much more to offer in terms of weather resistance, durability and freedom of design.



It's multifaceted expressiveness complements every style perfectly. Modern in appearance, the Metro rainscreen tile has no problem adapting to different designs, whether they are traditional or progressive.

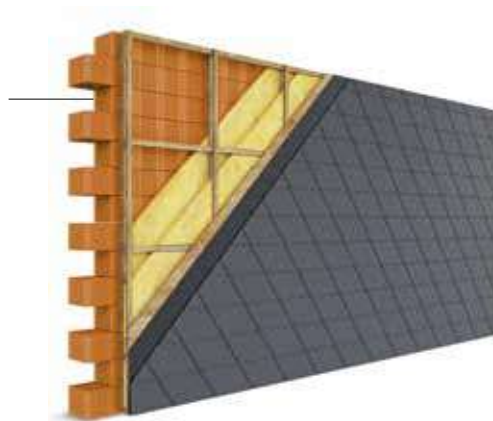
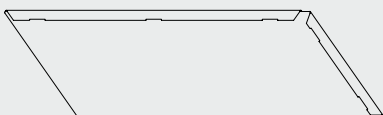
- 1 Modern, large flatlock tile
- 2 Dynamic surface structure
- 3 For contemporary architecture
- 4 100% maintenance-free
- 5 Lasts for generations

#### TECHNICAL DATA METRO

Size in mounted surface:  
Metro: 270 x 440 mm; 8,4 Pcs / m<sup>2</sup>

Material: all Roofinox surfaces & alloys  
Fastening: concealed, with Roofinox clips  
Substrate: fully supported sheathing > 24mm or  
metal subframing with Roofinox SF corrugated  
profile

Please respect country-specific standards and  
technical regulations  
Weight: 5,6 kg / m<sup>2</sup>



WALL STRUCTURE



SINGLE PANEL



Roofinox

# Metro

Roofinox Metro.  
The modern flatlock tile.



The ideal choice for modern architecture. Due to the parallel bevels, the façade flatlock tile creates a dynamic surface structure. The variable light effect depending on the sun's position ensures liveliness. Roofinox Metro is also used for indicating specific edges and alignments of a building. When applied over a large area, Metro creates a homogenous but dynamic image.



Sophisticated and elegant, the small-format diamond tiles cover façades with delicate scales, thus protecting the building with all its might. The Mansard rhombus gracefully encloses dormers, gables and parapets. For those with an eye for detail.



The very pointed version of the Roofinox Mansard rhomboid pattern ensures an exceptionally delicate look. The different effect in modern and traditional architecture is exciting. Mansard tiles are particularly appreciated because of their textile structural appearance. Due to the partial application of the tile, parts of the building are attractively emphasized and made more accessible. Large area coverage results in a homogeneous, finely structured look.

# Mansard

Roofinox Mansard.  
The elegant rhomboid tile.



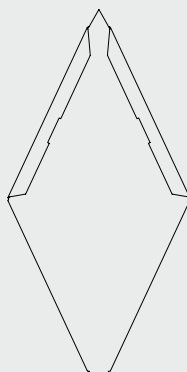
- 1 Filigree, elegant wall design
- 2 Different effect in modern and traditional architecture
- 3 Also suitable for emphasizing individual building parts
- 4 Results in homogenous, delicately structured texture

## TECHNICAL DATA MANSARD

Size in mounted surface:  
Mansard: 270 x 530 mm; 12,5 Pcs / m<sup>2</sup>

Material: all Roofinox surfaces & alloys  
Fastening: concealed, with Roofinox clips  
Substrate: fully supported sheathing > 24mm or  
metal subframing with Roofinox SF corrugated  
profile

Please respect country-specific standards and  
technical regulations  
Weight: Mansard: 6,2 kg / m<sup>2</sup>



WALL STRUCTURE



SINGLE PANEL



Roofinox HFX stainless is perfect for standing seam technique. It was specially developed for this type of façade. Roofinox withstands any storm, providing peace and security for generations. For unlimited design possibilities on any façade.

- 1 Tradition and character
- 2 Elegant, matt, natural
- 3 Lasts for generations
- 4 100% maintenance-free
- 5 Horizontal or vertical alignment

#### TECHNICAL DATA STANDING SEAM

Size in mounted surface:  
Sheet width: 425 mm to 550 mm  
Sheet lengths: from 0,5 to 30 m possible due to the particularly low thermal expansion of Roofinox stainless steel

Material: all Roofinox surfaces & alloys  
Fastening: concealed, with Roofinox clips  
Substrate: fully supported sheathing > 24mm or metal subframing with Roofinox SF corrugated profile

Please respect country-specific standards and technical regulations

Weight:  
Width 425 mm: 4,7 kg / m<sup>2</sup>  
Width 550 mm: 4,5 kg / m<sup>2</sup>



WALL STRUCTURE



SINGLE PANEL



# Roofinox Standing Seam

Roofinox standing seam.  
The metal façade classic.



Not without reason, the most widely used classic in covering metal façades. The standing seam has a very long tradition in craftsmanship and represents the highest quality of workmanship. It creates a clear, linear structure. Its very slim profile is suitable for both traditional and modern architecture. By modulating coverage width, exciting visual effects can be achieved.

H.E.L.P. emergency centre Ischgl; horizontal façade panels of varying widths in Roofinox Dura Bronze; Photo: Ventira Architects



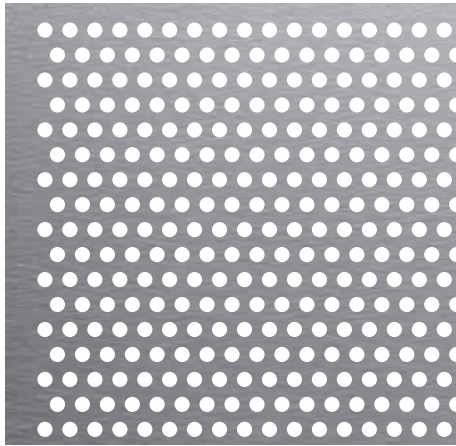
# Perforation

Perforated metal for designs that play with transparency.

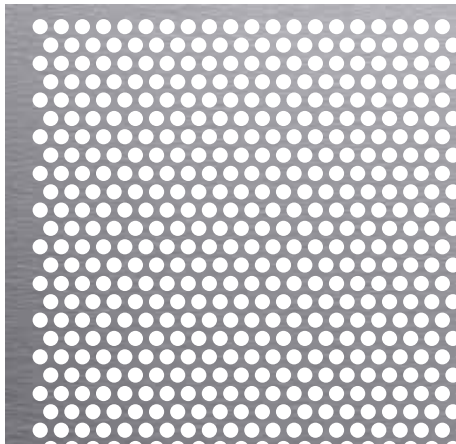
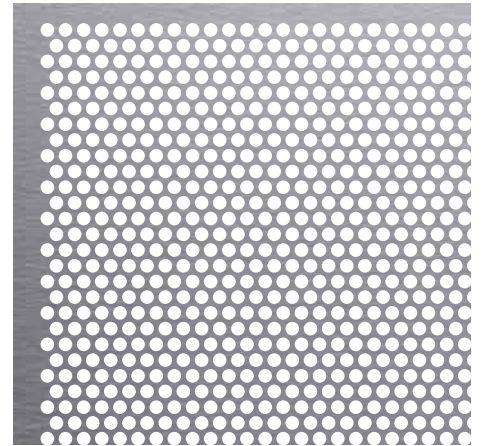
All Roofinox façade elements can be produced in perforated versions. Thus, our façade elements are suitable also as visual or sun protection.

HFX stainless from Roofinox is the ideal starting material for perforated sheets. The material's outstanding strength provides maximum surface stability and, without additional surface treatment, retains extraordinarily high corrosion protection.

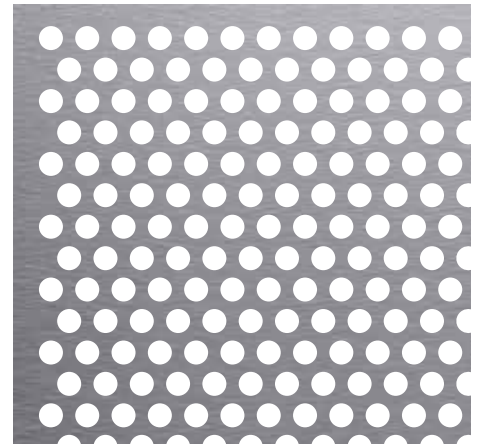
1



2



3



4

1 Perforation 1  
Description: RVi0530  
Hole diameter: 5 mm  
Free cross section (A0): 30%

2 Perforation 2  
Description: RV0351  
Hole diameter: 3 mm  
Free cross section (A0): 51%

3 Perforation 3  
Description: RV0546  
Hole diameter: 5 mm  
Free cross section (A0): 46%

4 Perforation 4  
Description: RV0840  
Hole diameter: 8 mm  
Free cross section (A0): 40%

# Designs

Like no other.

1

## Roofinox Classic

The design HFX stainless  
Design: brush-rolled



2

## Roofinox Pearl

The elegant HFX stainless  
Design: bead blasted



3

## Roofinox Plus matte

The distinctive HFX stainless  
Design: ribbed



4

## Roofinox Tin matte

The patina HFX stainless  
Design: matte tin-plated



5

## Roofinox Chroma

The mirror HFX stainless  
Design: mirror rolled



6

## Roofinox Spectra

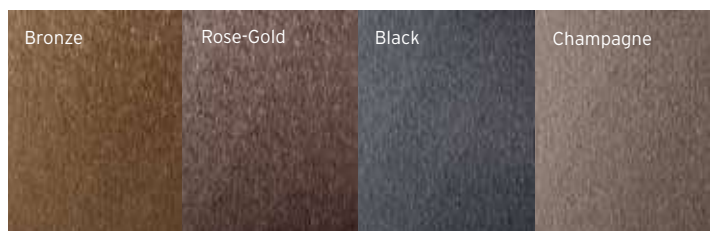
The colorful HFX stainless  
Design: pigmented



7

## Roofinox Dura

The metallic shimmering HFX stainless  
Design: electro-coloured



Roofinox

# R.SYS

Extremely durable, practically maintenance-free and simply beautiful:  
The complete roof drainage system from Roofinox.

Well-planned drainage protects the building permanently from water damage. Roofinox HFX stainless gutters and pipes resist wind and storm, are completely rust-free and prevent algae and root damage. Throughout the year, you live safely and comfortably. For decades.

Roofinox drainage protects your home.  
Like no other.

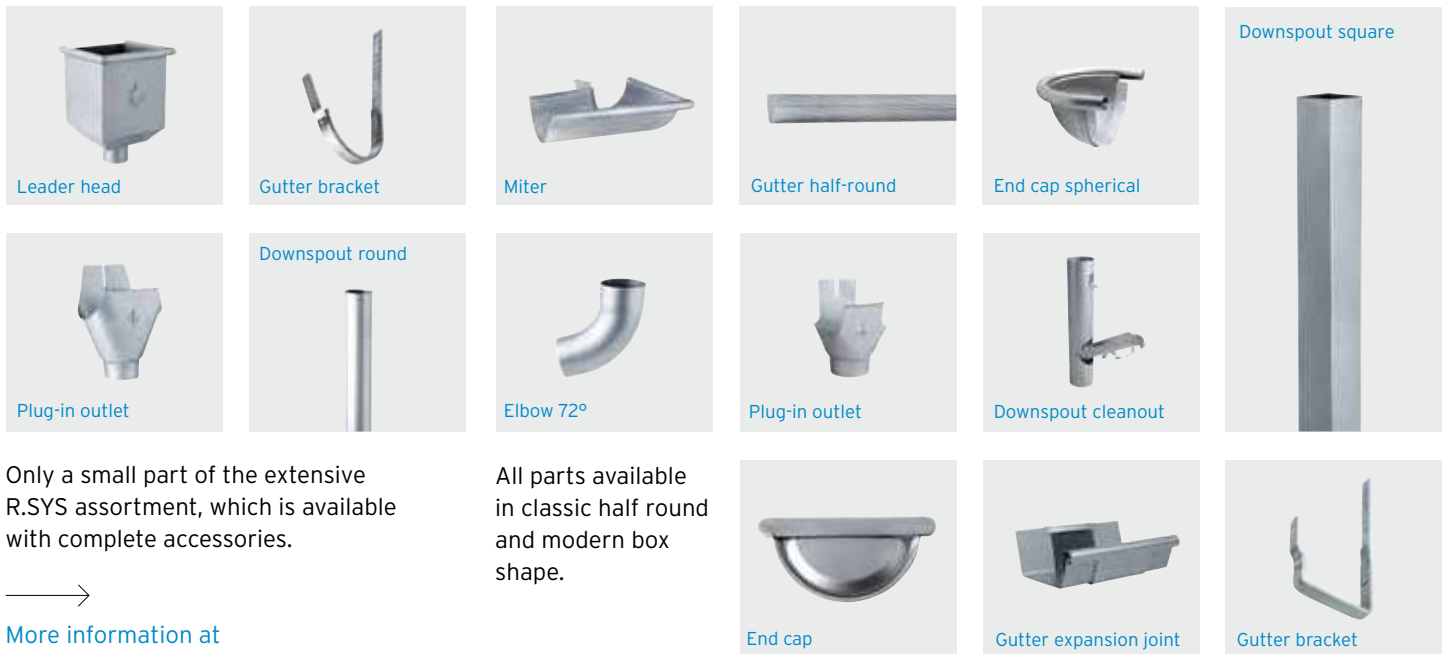
The nicest thing about it: Roofinox HFX stainless is extremely kind to the environment. There is no detectable particle removal and doesn't react to water. Roofinox HFX stainless contains more than 90% recycled material and remains 100% recyclable.

Roofinox drainage - sustainable and environmentally friendly.  
Like no other.



Please find more information in the brochure "Roofinox Drainage."

## Partial product range R.SYS



Only a small part of the extensive R.SYS assortment, which is available with complete accessories.



More information at  
[www.roofinox.com](http://www.roofinox.com)

All parts available in classic half round and modern box shape.

## Disclaimer and copyright

All information in this document and on Roofinox websites is based on experience and laboratory testing. Guarantees on services and surfaces cannot be derived from this document. Applicable warranties are contained in the relevant agreements and our terms and conditions. Nothing contained in this document constitutes an assurance, warranty, specification or obligation by Roofinox AG or any of its subsidiaries or affiliates.

All rights reserved. No part of this documentation may be reproduced, transmitted or archived in any form or by any means whatsoever including, but not limited to electronic, mechanical or photocopying without prior permission from Roofinox AG.

Roofinox.  
Like no other.



Version 2019/12

**ROOFINOX®**  
Like no other.

Roofinox GmbH  
Industriestrasse 11  
A-6832 Sulz  
Tel. +43 5522 79040-0

[www.roofinox.com](http://www.roofinox.com)  
[info@roofinox.com](mailto:info@roofinox.com)